



**C2R2 MAX**

Version 02 – 02 April 2009

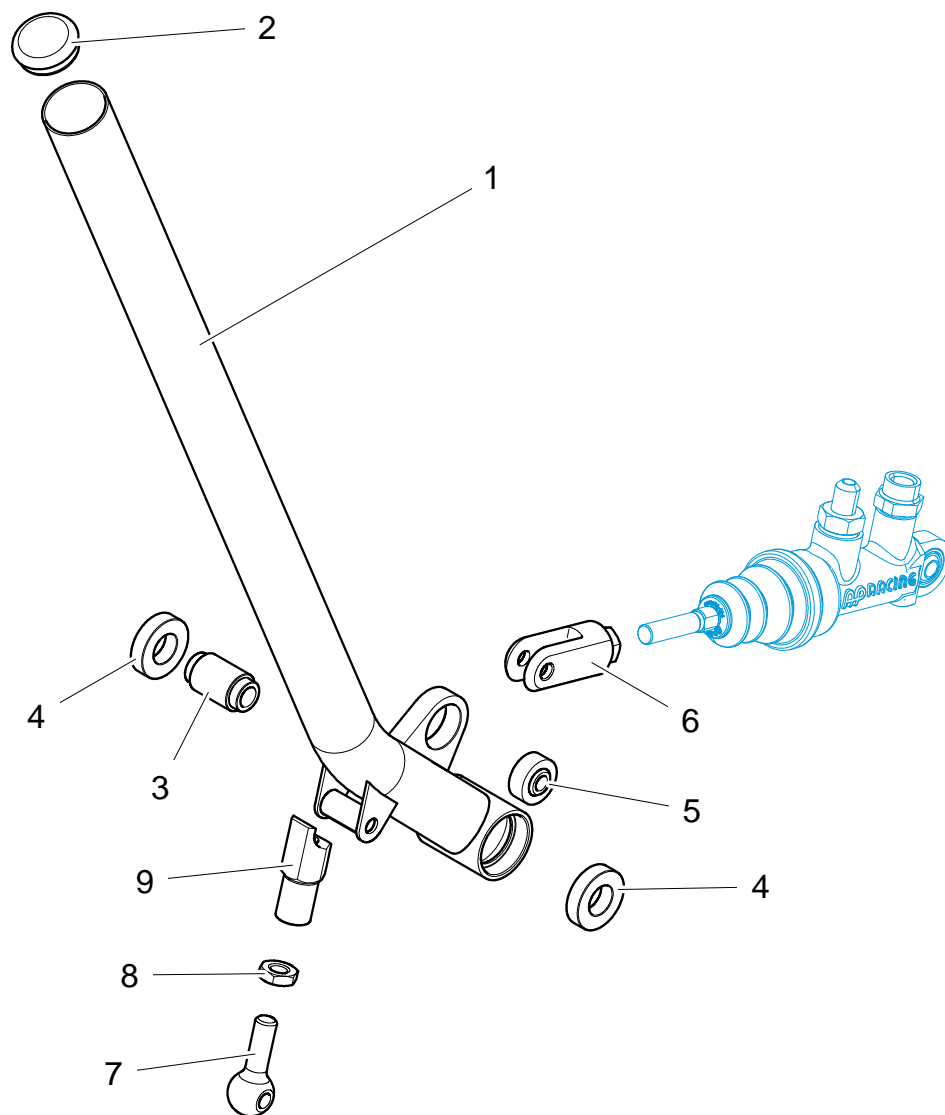
# ***F71***

## ***HYDRAULIC HAND BRAKE***





Version 02 – 02 April 2009

[illegible]



### Assembling the hand brake lever.

Fit the end cap ([ref. 2](#)) on the hand brake lever ([ref. 1](#)).



Check the state of the bearing housings on the hand brake lever. If there are traces of paint or rust, remove them by a light rubbing down.

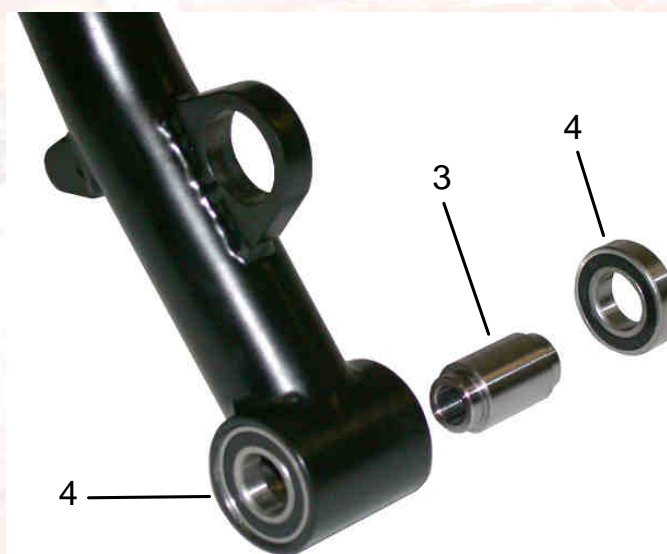
**600 grain**



Lightly coat the external bearing cage ([ref. 4](#)) with Loctite.

Assemble the bearing in the lever, using a socket (or equivalent) corresponding to the diameter of the external cage.

The bearing must come into abutment with the shoulder of the lever.



**648**

**F71**  
**Hydraulic hand**  
**brake**



**S**  
**BRAKING**  
**SYSTEM**



Fit the spacer ([ref. 3](#)) on the bearing previously fitted on the lever.

Assemble the second bearing ([ref. 4](#)), external cage coated with Loctite (identical method to the assembly of the first bearing).

**648**

Lightly coat the external cage of the ball joint ([ref. 5](#)) with Loctite.

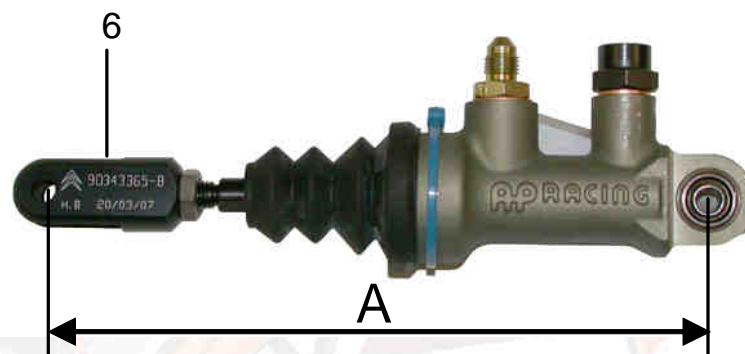
Fit the ball joint ([ref. 4](#)) on the lever ([ref. 1](#)) as shown in the photo opposite.

**648**



Fit the master cylinder yoke ([ref. 6](#)) and the counter nut (ref. on the master cylinder).

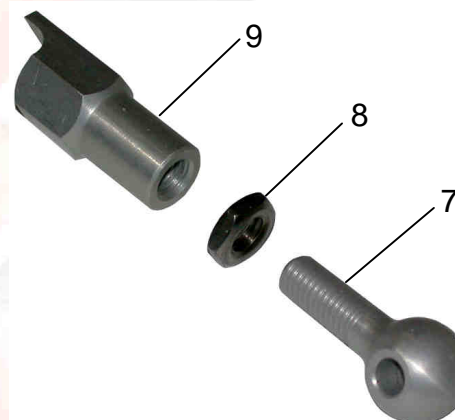
Adjust the nominal length (A) by screwing / unscrewing the yoke to obtain **137 mm**.



Assemble the locking tie rod.

Fit the counter nut ([ref. 8](#)) on the male tie rod ([ref. 7](#)).

Fit the male tie rod and counter nut assembly on the female tie rod ([ref. 9](#)).



**F71**  
Hydraulic hand  
brake



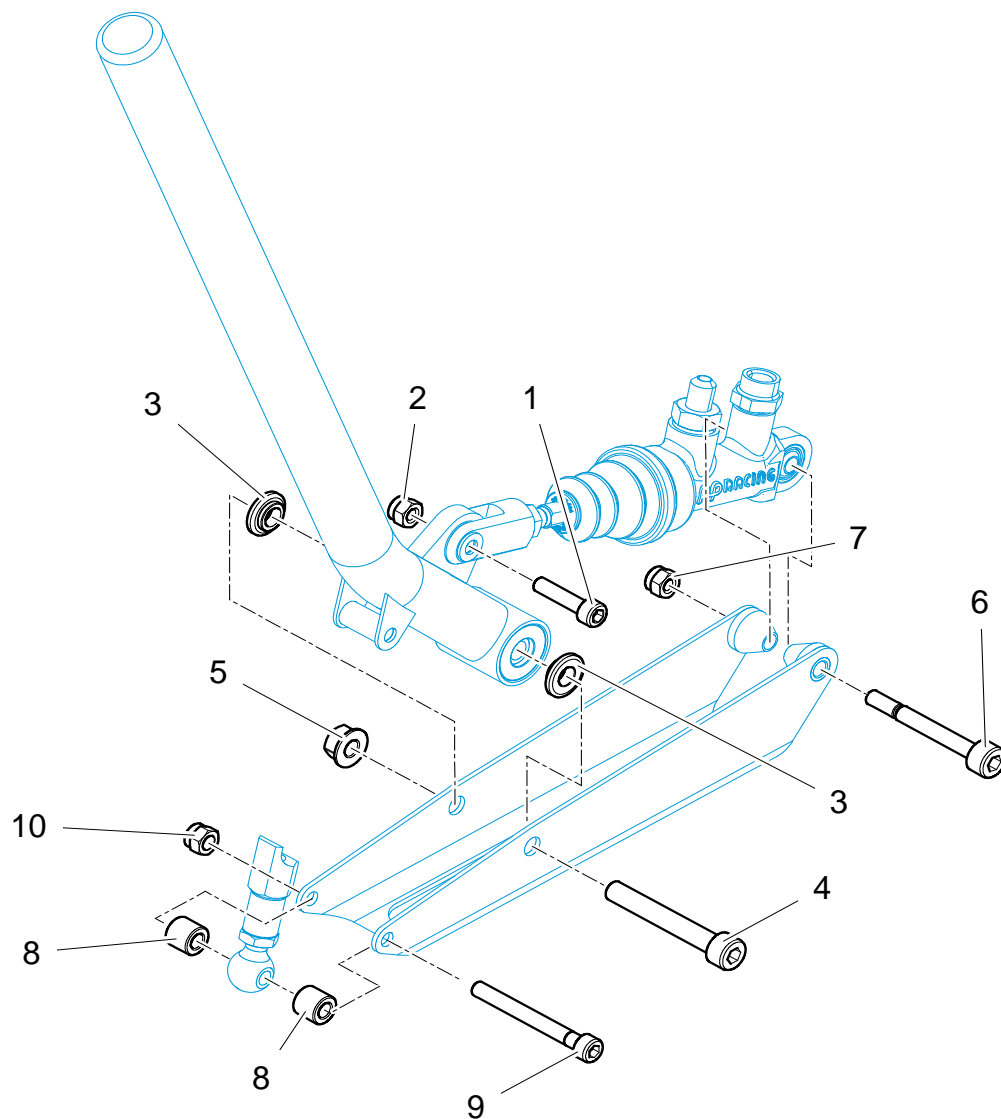
**S**  
BRAKING  
SYSTEM





# C2R2MAX

Version 02 – 02 April 2009



Ref	Part Number	Qty	Description
1	PS82021A10	1	Lever ball joint axle screw HSHC M6x100 lg40 C112.9
2	BCSP693586	1	Lever ball joint axle M6 elliptical lock nut
3	1G2241233A	2	Lever pin external spacer
4	BCSP6913H7	1	Lever pin screw HSHC M8x125 lg50 C110.9
5	BCSP7238EL	1	Lever pin M8 lock nut
6	1F7162505A	1	Master cylinder rear fixing screw HSHC reduced body diam.
7	BCSP693586	1	Master cylinder rear M6 elliptical lock retaining nut
8	1F7162511A	2	Locking tie rod pin spacer
9	BCSP163703	1	Locking tie rod pin screw HSHC M6x100 lg50 C18.8 with washer
10	BCSP693586	1	Tie rod pin M6 elliptical lock nut

### Assembling the hand brake lever assembly on the yoke.

Fit the master cylinder assembly on the lever's ball joint with the screw ([ref. 1](#)) and the nut ([ref. 2](#)).

Check that the tightening of the screw does not restrict the yoke or the bearing, and that the lever moves freely.



242

**F71**  
**Hydraulic hand**  
**brake**



**S**  
**BRAKING**  
**SYSTEM**

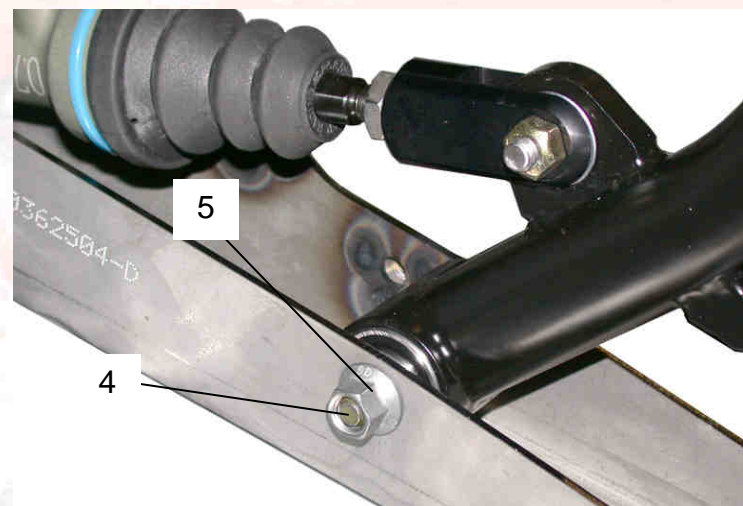


Fit the external spacers ([ref. 3](#)) on the lever assembly.



Fit the lever assembly on the yoke, using the screw ([ref. 4](#)) and the nut ([ref. 5](#)).

Gently tighten the screw. The lever must operate completely freely over its entire range, without strain or drag.

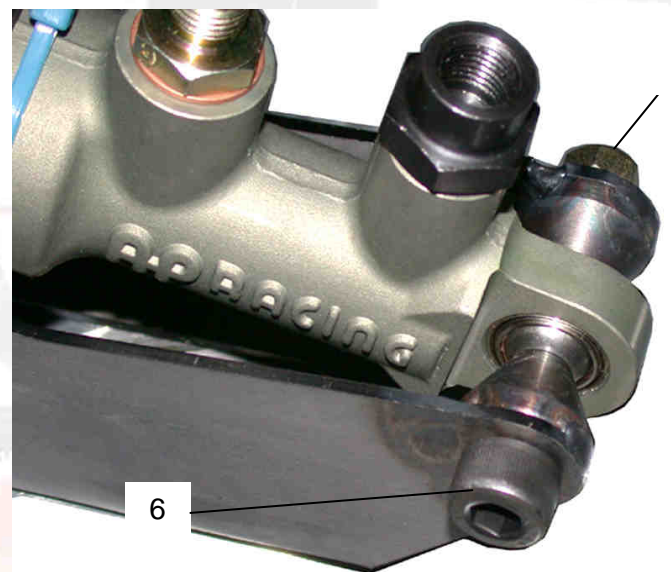


242



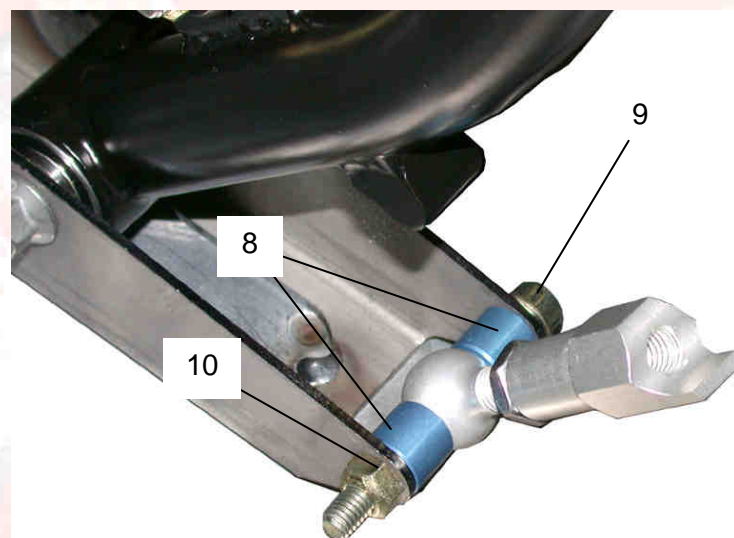


Fit the master cylinder on the yoke, using the screw ([ref. 6](#)) and the lock nut ([ref. 7](#)).

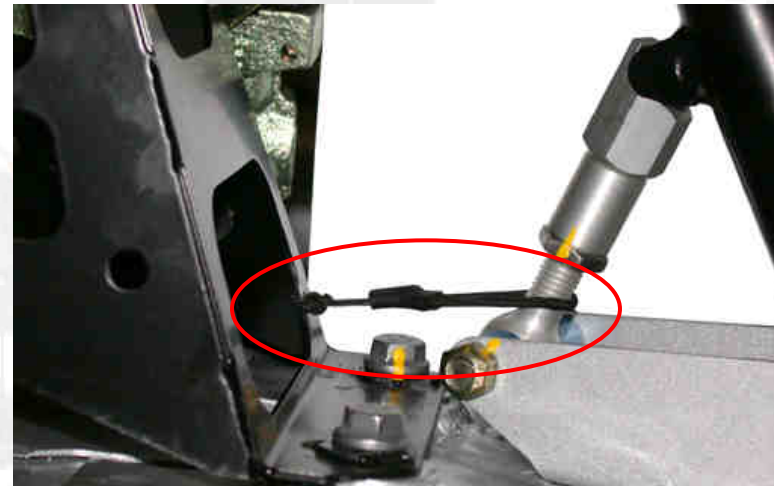


Fit the locking tie rod using the screw ([ref. 9](#)), two spacers ([ref. 8](#)) and the nut ([ref. 10](#)).

*The length adjustment of the locking tie rod will be done when the automobile is finished, and debugged (final purge of the brake circuit and running-in of the disks / pads).*



Prepare an elastic band between the gearbox lever mount and the hand brake locking lever and to avoid its accidental blocking during use (pin, etc).



**Once the hand brake assembly is assembled, check that the lever operates freely over its whole travel, without drag.**